

HARMONY

Q	U
A	D

3 0 0 x 3 0 0



HALF BLUE



HALF ROSSO



HALF ANTRACITE



HALF MIST



HALF SLATE



GREIGE



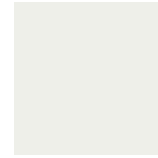
BLUE



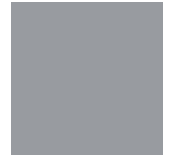
ROSSO



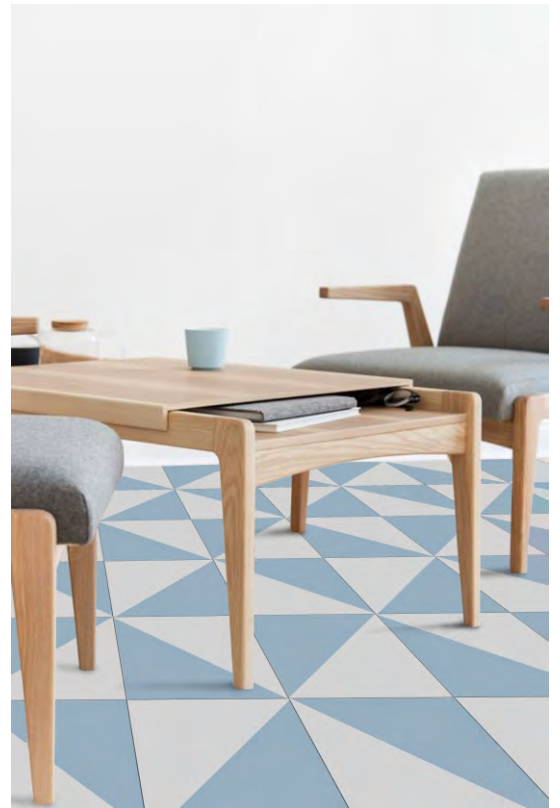
ANTRACITE

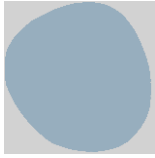


MIST

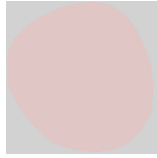


SLATE

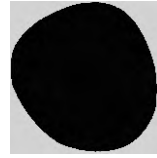




DROP BLUE



DROP ROSSO



DROP ANTRACITE



DROP MIST



DROP SLATE



GREIGE



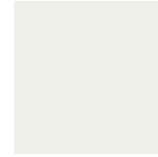
BLUE



ROSSO



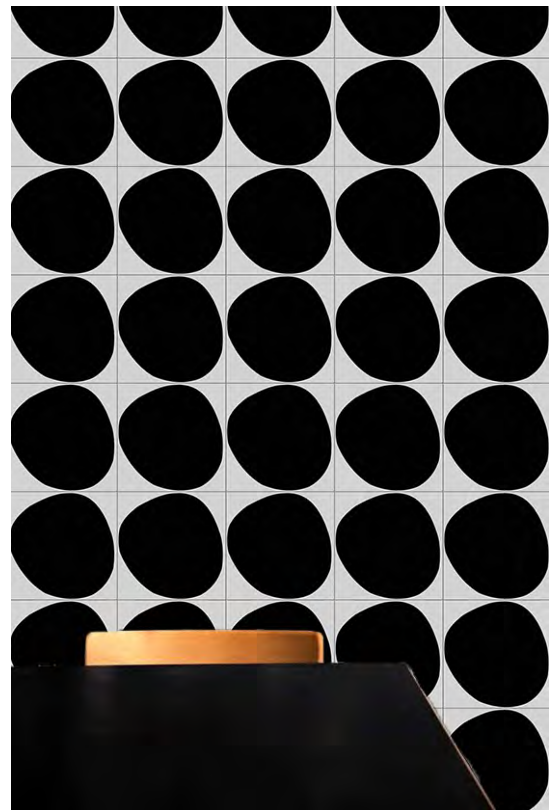
ANTRACITE

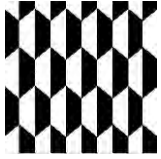


MIST



SLATE





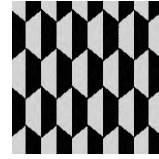
ESAGONO
BIANCO NERO



ESAGONO BLUE



ESAGONO ROSSO



ESAGONO
ANTRACITE



ESAGONO MIST



ESAGONO SLATE



GREIGE



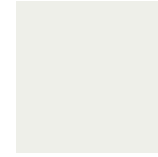
BLUE



ROSSO



ANTRACITE



MIST



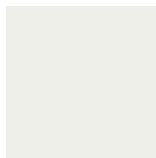
SLATE







DIMENSION
SLATE



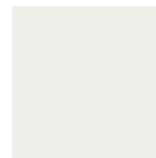
MIST



SLATE



ROMBO SLATE



MIST

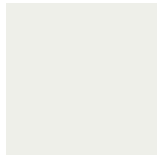


SLATE





CROSS SLATE



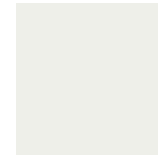
MIST



SLATE



MULTIFORM
ASH



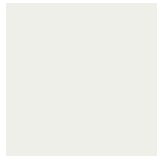
MIST



ASH



CROSS MIST



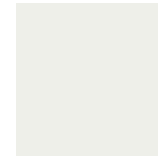
MIST



ANTRACITE



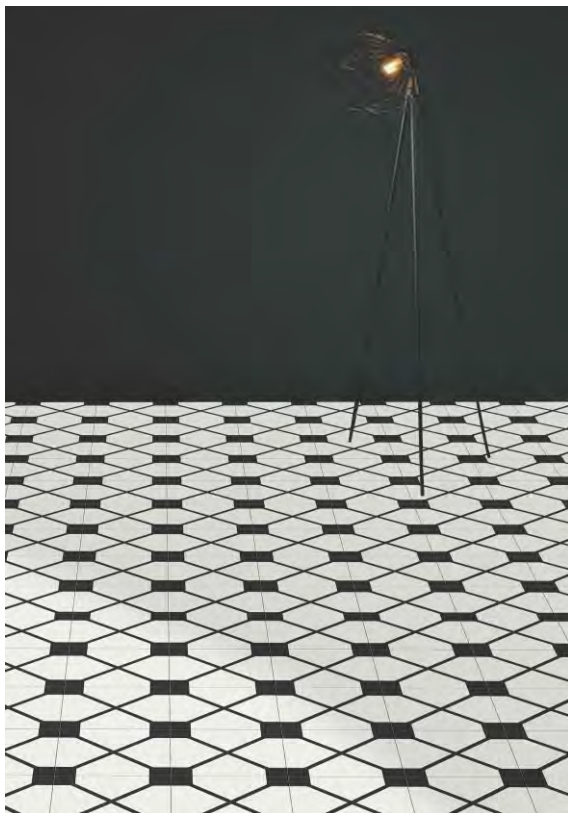
MULTIFORM
SLATE



MIST

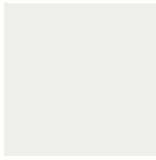


SLATE





FORMA SLATE



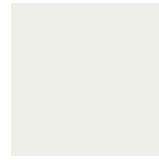
MIST



SLATE



RULE GRAPHITE



MIST



GRAPHITE





CUBE ANTRACITE



CUBE SLATE



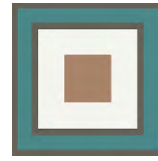
CUBE GIALLO



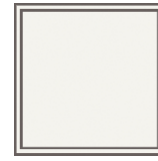
CUBE MINT



CUBE LIME



INSCRIBE A



INSCRIBE B



TEAL



COPPER





VERTEX
GRAPHITE



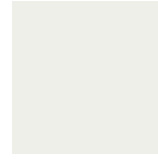
SORBET



GRAPHITE



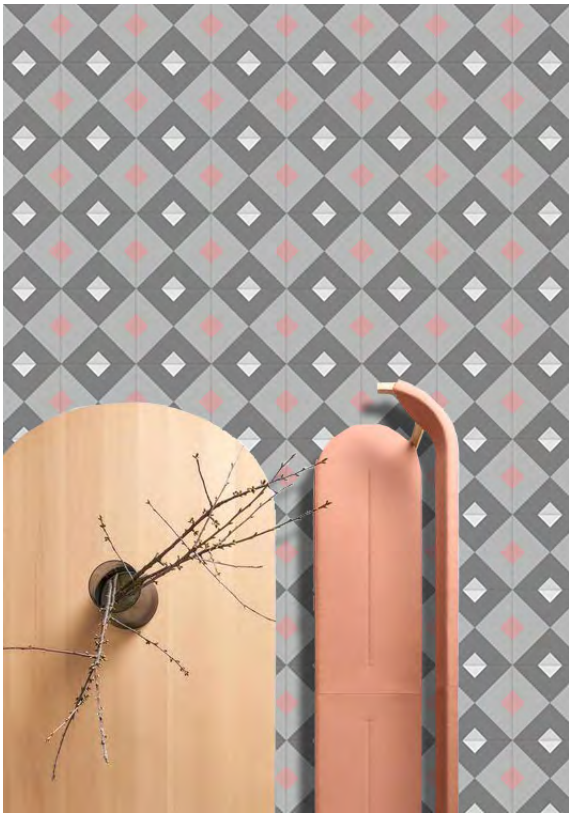
OBELISK TEAL

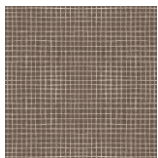


MIST

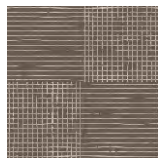


TEAL





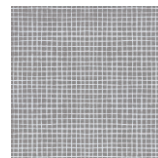
GRID ASH



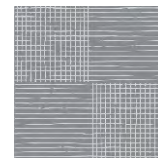
QUARTER
GRID ASH



ASH



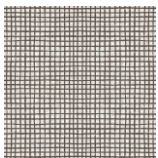
GRID GRAPHITE



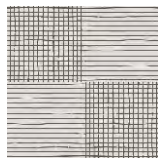
QUARTER GRID
GRAPHITE



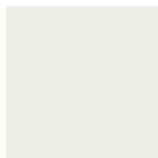
GRAPHITE



GRID MIST



QUARTER
GRID MIST



MIST





GREIGE



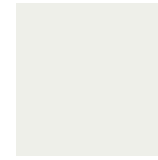
BLUE



ROSSO



ANTRACITE



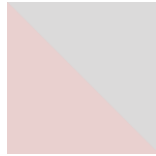
MIST



SLATE



HALF BLUE



HALF ROSSO



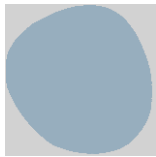
HALF
ANTRACITE



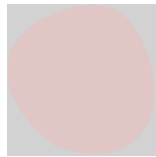
HALF MIST



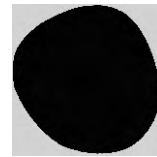
HALF SLATE



DROP BLUE



DROP
ROSSO



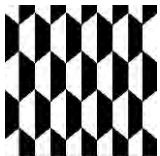
DROP
ANTRACITE



DROP MIST



DROP SLATE



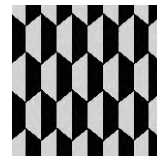
ESAGONO
BIANCO NERO



ESAGONO
BLUE



ESAGONO
ROSSO



ESAGONO
ANTRACITE

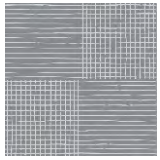


ESAGONO
MIST

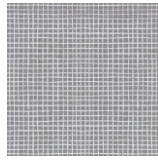


ESAGONO
SLATE





QUARTER
GRID GRAPHITE



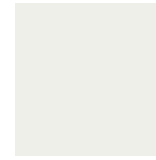
GRID
GRAPHITE



GRAPHITE



FORMA
SLATE



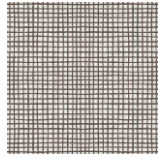
MIST



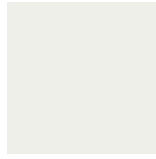
SLATE



QUARTER
GRID MIST



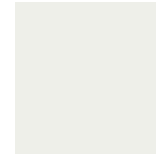
GRID MIST



MIST



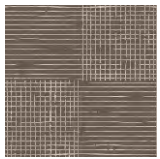
DIMENSION
SLATE



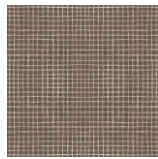
MIST



SLATE



QUARTER
GRID ASH



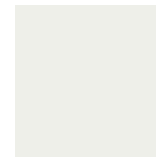
GRID ASH



ASH



ROMBO
SLATE



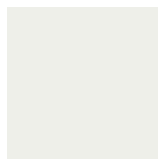
MIST



SLATE



CROSS
SLATE



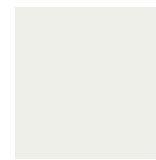
MIST



SLATE



RULE
GRAPHITE



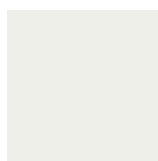
MIST



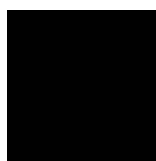
GRAPHITE



CROSS
MIST



MIST



ANTRACITE



VERTEX
GRAPHITE



SORBET



GRAPHITE



CUBE
ANTRACITE



CUBE SLATE



CUBE
GIALLO



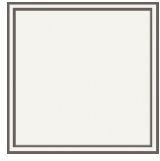
CUBE MINT



CUBE LIME



INSCRIBE A



INSCRIBE B



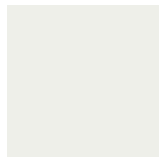
TEAL



COPPER



MULTIFORM
ASH



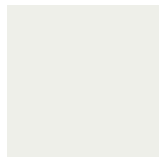
MIST



ASH



MULTIFORM
SLATE



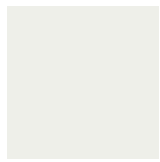
MIST



SLATE



OBELISK
TEAL





MIST



TEAL

PRICE CODE

 P - 9012

 P - 9014



Ar. Salonee Shah
Creative Director,
Graffiti (India) Pvt. Ltd.

Quad opens the way to several possible laying combinations for floor and wall surfaces.

Designed exclusively to give a modern contemporary look to the projects, quad is defined by - soft pastel hues and shades of grey , clean lines and a simple geometry.

It is an adaptable collection of basic shapes that lend themselves to various interpretations. Multiple layouts and solutions that allow a true personalization of the project.

Packaging Details		
Size in mm	No. of pcs./Box	Area coverage in Sqm./Box
300 x 300	8	0.72

* All sizes in mm

Note: Colours shown are as accurate as the limitations of the printing process will allow. Prospective customers are advised to inspect a sample of the tile before ordering. Every effort has been made to ensure the accuracy of the information given. However, the company reserves the right to change the specifications without prior notice. Sometimes variations in shade or size being inherent to ceramic industry may occur. Before fixing, we advise you to follow the fixing instructions on the cartons of the tiles as no responsibility can be accepted by the company once the tiles have been fixed.



GRAFFITI (INDIA) PVT. LTD.

Corporate Office : Graffiti House, Block No. 20, Magnet Corporate Park,
100 ft. Hebatpur-Thaltej Road, Off S.G.Highway, Thaltej,
Ahmedabad-380 054, INDIA.

Ph. : +91 79 29 709611/2/3/4, + 91 79 26406811/2/3

email : info@graffititiles.com

www.graffititiles.com